

MARKING GUIDE OF P6 SET NATIONAL EXAMINATION 2022-2023

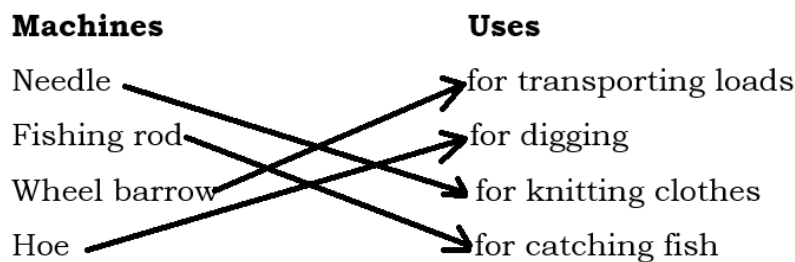
- 1) Agriculture helps us to get food
Agriculture helps us to get money by selling the goods
Agriculture helps us to get the grass to feed the cattle.
It is a source of income
People can get employed
- 2) Computer, smartphone, tablet, television, mobile phones
- 3) Plants provide food to people
Plants provide oxygen to people
Plants prevent global warming by reducing the level of carbon dioxide in the atmosphere.
Plants provide building materials
Plants provide firewood
Plants beautify the environment.
- 4) We can maintain trees healthy by providing them with fertilizers
We can maintain trees healthy by ploughing the area where trees are grown.
Protect your trees from pests
Watering them regularly
Remove weed and grass from trees.
- 5) Scissors, razor blade, ruler, paper cutter machines, pencil
- 6) It can cause soil erosion
It can cause the destruction of crops
It can cause the destruction of buildings and roads
It can cause flooding
It can cause the spread of diseases
It can kill people
It can cause flooding
- 7) Release of human and animal waste into water
Release of waste from the industries into water
Release of waste from the homes into water
Farm chemicals such as fertilizers
Agriculture
Mining
Defaecating in water sources
Washing cars near water sources

Washing clothes near water sources

- 8) A metal is a material that is typically hard and shiny.
Metals are good conductors of electricity and heat.
- 9) Always keep the chicken house clean.
Add preventive drugs to chicken feeds or drinking water.
Disinfect the feeding and watering equipment.
Isolate sick chicken
Vaccinate chickens
Separation of old chickens from young ones
- 10) They replace the nutrients lost through erosion or leaching.
They help to increase crop yields.
Inorganic fertilizers release their nutrients to crops very quickly. This makes crops grow fast.
They add fertility to soil
They make plants (crops) grow faster
They replace the nutrients lost through soil erosion.
- 11) By afforestation
Using terracing
Using soil cover
Using shelter belts
Contour ploughing
Digging ditches
Mulching
- 12) Toy car, toy house, motor cycle, bicycle, bags, socks, scarf, hats
- 13) At night there is quietness and no objects that distract sound movement unlike daytime.
At night there is less noise than during the day.
- 14) Classes of vertebrates are mammals, birds, reptiles, amphibians and fish.
- 15) The meat of rabbits is sold for food.
The fur of rabbit is made into wool and then woven into cloth.
Many people keep rabbits as pets.
Rabbit skin is used to make bags, gloves, shoes and ear muffs.
Rabbit droppings are used as manure.
- 16) Pliers, spanners, crew driver

- 17) Cleaning after use
 Oiling /Greasing
 Repairing
 Galvanizing tools
 Keeping the tools in a clean, dry and safe place.
 Keeping tools in **toolbox** after use.

18)



19) $6cm \times 40kg = Mass \times 8cm$
 $Mass\ of\ Tom = \frac{6cm \times 40kg}{8cm} = 30kg$

20) Ropes, mats, bags, balls, chairs and dustbins.

21) Socks: Sewing needle, Pair of scissors, Razorblade, Threads

Dolls: clay, water, model of the doll

Polygons: pencil, manila paper, ruler, razor blade

Toy car: wires, clay, scissors, papers

22) Writing a text

Playing games

Drawing

Typing letters

Downloading a song or movie

Playing a film

23) To have an internet connection; to have an E-mail account; your name; your date of birth; phone number; password;

24) A folder contains many files. A file is a single entity containing instructions or data stored on a computer or hard disk.
 A file is a saved document while a folder is a storage unit for files and documents.

25) (a) Sprite is an object that performs an action in dialogues and in form of cartoons. Or it is an object that can perform human character.
 (b) An animation is an icon used to display a given set of comments.

It is the act of giving an object a human character. (Speaking and movement)

Is making sprite to move, say and speak.

- 26) Decreasing the use of fossil fuels which are non-renewable energy sources.

Using renewable energy sources instead of using non renewable energy sources such as fossil fuels which pollute the environment.

- 27) Polluted air can cause diseases of the respiratory system.

It can lead to global warming.

It can cause acidic rain.

- 28) Biodegradable wastes are also referred to as decomposable wastes, recyclable waste, food waste or organic waste.

- 29) Quarantine

Isolation

Use of drugs such as antibiotics to treat the disease

Dipping or spraying to control external parasites that may cause diseases among others

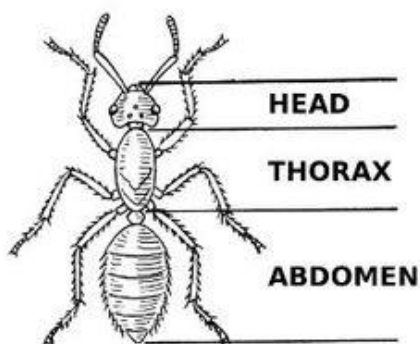
- 30) To prevent the spread of diseases

To maintain the good health of goats and cattle

Treat them with antibiotics

- 31) Incubation of eggs means keeping eggs under conditions that allow them to hatch into chicks.

- 32)



- 33) Stretch the cramped muscle to increase flexibility.

Gently massage the cramped muscle.

Massage

Drink plenty of water.

Take a hot water bath.

34)

Legumes	Root tubers	Vegetables	Fruits
Soya beans	Carrot	Spinach	Mango
Beans	Cassava	Cabbage	Apple

35) A balanced diet is a diet that contains all the nutrients in the right amounts.

Carbohydrates is one of the nutrients that is used to provide energy to the body. Carbohydrates are described as energy giving foods.

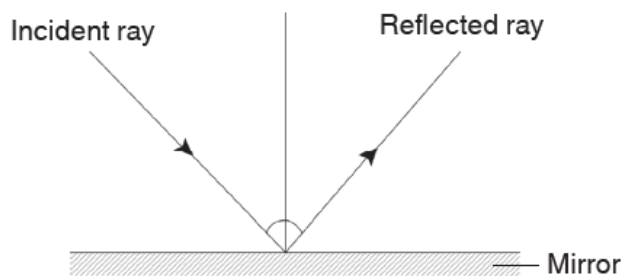
36) Salivary glands which produce saliva

Gastric glands which produce the gastric juice

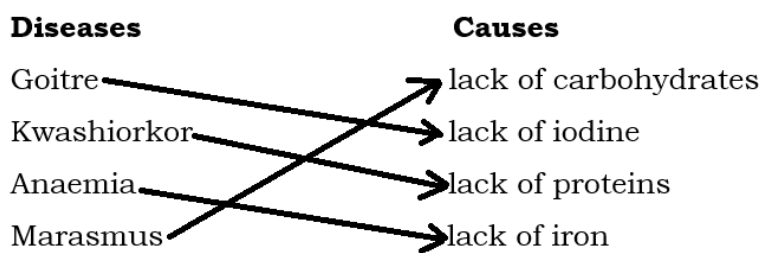
Pancreas which produces the pancreatic juice

Liver which produces the bile

37)



38)



39) A balanced diet contains carbohydrates, proteins, fat and oils, minerals, vitamins and roughages.

40) (a) Bile

(b) Pancreatic juice

41) Collect organic wastes

Dig a small pit

Throw the wastes in the pit

- Cover the pit with a layer of soil
 - Pour some water so that it is moist
 - Using worms or vermicomposting
 - Pot composting using leftovers of food and fruit peels
- 42) (a) Strawberry: runners (asexual reproduction method)
 (b) Cassava: cuttings (asexual reproduction method)
- 43) Plasma
- 44) Inhalation (breathing in) or exhalation (breathing out)
- 45) Abstinence: not having sex before marriage.
 Using condoms
 Using contraceptive pills
 Prolonged breastfeeding
 Making informed choices
 Choose good friends.
 Avoid risky behavior such as drug abuse
- 46) Reproduction is the production of new individuals or offspring.
- 47) Avoiding **smoking**
 Seeking immediate medical care in case of a respiratory problem.
 Exercising regularly to strengthen respiratory muscles.
 Avoiding inhaling unknown or dangerous substances or chemicals.
 When spraying chemicals in the house or any other place, always wear protective clothing, for example, a gas mask.
 Eating a balanced diet
- 48) Solid state or liquid state or gas state
- 49) Speakers of radios, television, electric bells, generators, telephones, computers, watches, compass
- 50) Renewable energy sources are those that cannot get finished. They can actually be recycled or reused. Examples include: Sunlight, Wind, Water or hydroelectric power
 Non-renewable energy these refer to sources of energy that can get exhausted. They include fossil fuels such as petrol and natural gas.

